

Gold Standard Toaster

Model GST-1V Owner's Manual

Manufacturing Numbers:
9211000 & 9211001

Table of Contents

Overview	2
Before Use	2
In Case of Damage	2
Website	2
Service/Technical Assistance	2
In Case of Damage	2
Equipment Information to Save	2
Authorized Service Agency	2
Safety Information	3
Installation	3
Maintenance	3
Service	3
Specifications	4
Electrical Specifications	4
Plug Configurations	4
Installation	5
Location	5
Operating Instructions	6
Toasting Adjustments	6
User Mode	6
Manager Mode	7
Safety Features	7
Hi-Limit Control	7
Purging Product from Toaster	7
Daily Cleaning	8
Clean the Toaster and Belt Wraps	8
Quarterly Cleaning	9
Remove Belt Wraps/Clean Rollers	9
Install Belt Wraps	10
Annual Cleaning	10
Clean Fans/Electrical Housings	10
Troubleshooting	11
Troubleshooting Continued	12
Troubleshooting Continued	13
Replacement Parts	14
Parts List	14
Replacement Parts	16
Exploded View 1	16
Exploded View 2	17
Exploded View 3	18
Exploded View 4	19
Exploded View 5	20
Wiring Diagram	21
Notes	22
Notes	23
Limited Warranty	24

Overview

2 This unit is intended to be used for commercial applications, for example: in kitchens of restaurants, canteens, hospitals and in commercial enterprises such as bakeries, butcheries, etc., But not for continuous mass production of food.

Before Use

3 This manual contains safety, installation, and operating procedures for the unit.
3 Read and understand it completely before installing or operating the unit. Keep this document for reference. If the unit changes ownership, this manual must accompany it.

In Case of Damage

6 If the unit arrives damaged, file a claim with the carrier immediately. Save all packing materials when filing a claim. Freight damage claims are the responsibility of the purchaser and are not covered under warranty.

Website

9 www.antunes.com

Service/Technical Assistance

In Case of Damage

If any parts are missing or damaged, problems with the installation or operation of this product contact Antunes Customer Service immediately at +1-877-392-7856 (toll free).

Fill in the information in the next section and have it ready when calling for assistance. The serial number is on the specification sticker located on the system.

Equipment Information to Save

Purchased from:

Date of purchase:

Model number:

Serial number:

Manufacturing number:

Authorized Service Agency

Name:

Phone No:

Address:

Safety Information

Installation

- Read and understand all instructions before installing or using the unit.
- Install this unit to comply with the basic plumbing code of the Building Officials and Code Administrators, Inc. (BOCA) and the Food Service Sanitation Manual of the Food and Drug Administration (FDA).
- Install and locate the equipment only for its intended use as described in this manual.

WARNING

ELECTRICAL SHOCK HAZARD.

Failure to follow the instructions in this manual could result in serious injury or death.

Do not modify the power supply cord plug. If it does not fit the outlet, have a proper outlet installed by a qualified electrician.

Electrical ground is required on this appliance.

Check with a qualified electrician if you are unsure if the appliance is properly grounded.

Do NOT use an extension cord with this product.

The unit should be grounded according to local electrical codes to prevent the possibility of electrical shock. It requires a grounded receptacle with separate electrical lines, protected by fuses or circuit breaker of the proper rating.

NEVER unplug the power cord while the unit is running. Use the proper shutdown procedure before unplugging the power cord.

Operation

- The unit is furnished with a properly grounded cord connector. Do not attempt to defeat the grounded connector.
- Do not operate the unit if it has been damaged or dropped, if it has a damaged cord or plug, or if it is not working properly.
- Do not block or cover any openings on the equipment.
- Do not immerse the cord, unit, or plug in water.
- Keep the cord away from heated surfaces.
- Do not allow the cord to hang over the edge of a table or counter. This appliance is not to be used by persons (including children) with reduced physical, sensory or mental capabilities, or lack of experience and knowledge unless they have been given supervision or instruction.
- Children being supervised are not to play with the appliance.
- Bread may burn. Therefore toasters must not be used near or below curtains or other combustible walls and materials. Failure to maintain safe operating distances may cause discoloration or combustion.

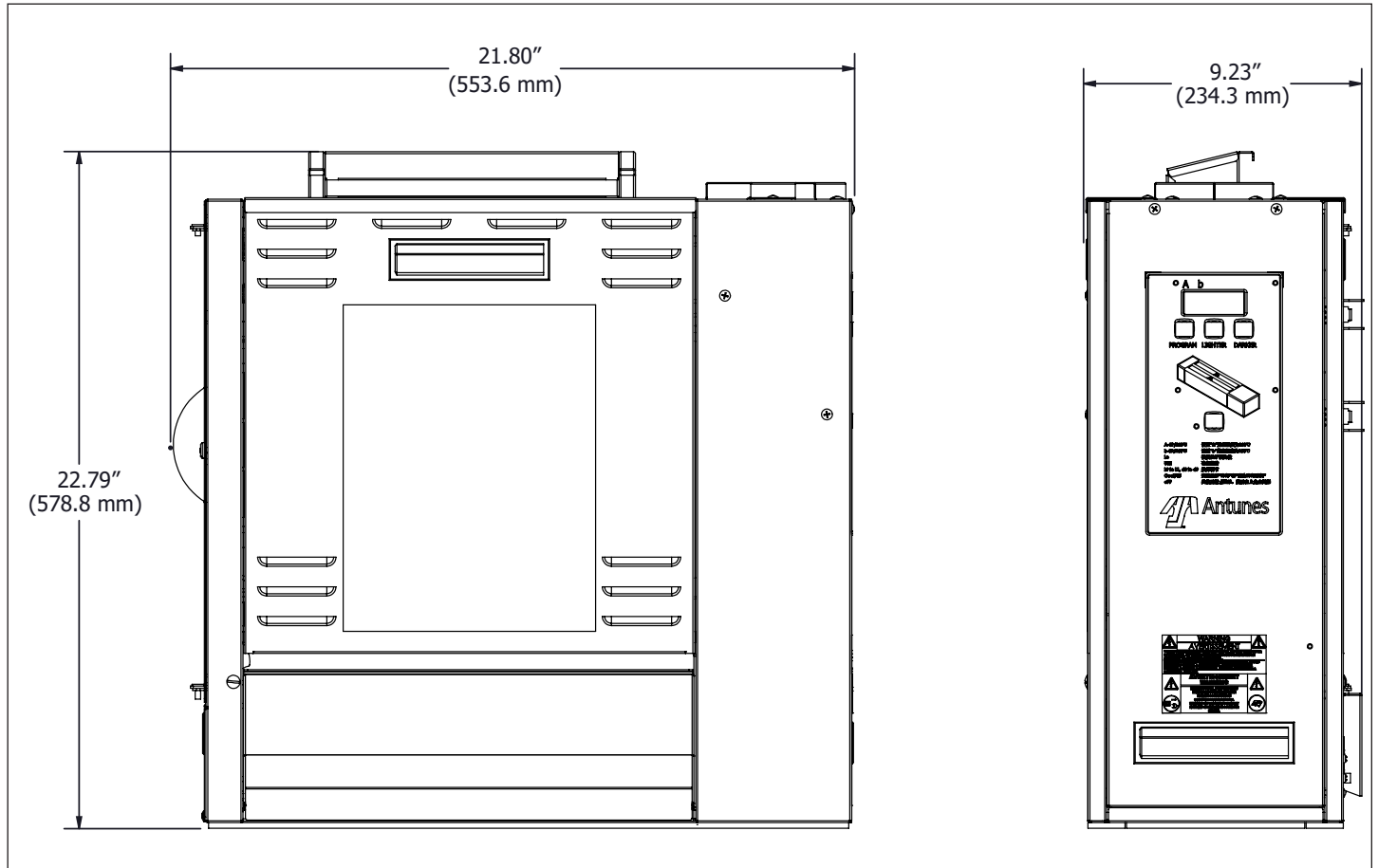
Maintenance

- Do not use abrasive materials; they can damage the unit's stainless steel finish.
- Do not use corrosive chemicals in this equipment.
- Chlorides or phosphates in cleaning agents (e.g., bleach, sanitizers, degreasers, and detergents) can permanently damage stainless steel equipment. The damage is usually in the form of discoloration, dulling of the metal surface finish, pits, voids, holes, or cracks. This damage is permanent and is not covered by warranty.
- Always use a soft, damp cloth for cleaning. Rinse with clear water and wipe dry. When required, always rub in the direction of metal polish lines.
- Routine cleaning should be performed daily with soap and water.
- Rub off finger marks and smears using soap and water.
- Do not clean the unit with a water jet or steam cleaner.

Service

- Inspection, testing, and repair of electrical equipment must be performed only by qualified service personnel.
- To avoid possible personal injury and/or damage to the unit, all inspections, tests, and repair of electrical equipment should be performed by qualified personnel ONLY. Contact Antunes Technical Service for adjustment or repair.
- Turn the power off, unplug the power cord, and allow unit to cool to room temperature before performing any service or maintenance.
- If the supply cord is damaged, it must be replaced by the manufacturer, its service agent, or a similarly qualified person in order to avoid an electrical hazard.
- Cleaning and user maintenance shall not be made by children without supervision.

Specifications



Electrical Specifications & Plug Configuration

Model & Mfg. No	Volt	Watts	Hz.	Plug Description	Plug Configuration
GST-1V 9211000	230	3900	50/60	IEC-309 Pin & Sleeve, 32 Amp., 230 Volt	
GST-1V 9211001	208	3900	50/60	IEC-309 Pin & Sleeve, 32 Amp., 230 Volt	

Installation

1. Open the shipping carton. It contains:
 - GST-1V toaster
 - Accessories box
2. Remove the accessories box from the large box.
3. With the help of another person, carefully remove the GST-1V from the large box.
4. Remove all protective coverings from the unit.
5. Open the Accessories Box. It contains:
 - Owner's Manual
 - Feeder

NOTICE: If any parts are missing or damaged, contact Antunes Customer Service IMMEDIATELY at +1-877-392-7856 (toll free).

6. Wipe the entire exterior of the toaster and the accessories mentioned above with a clean towel sprayed with sanitizer. Allow to air dry.

NOTICE: Do NOT use a dripping wet cloth. Wring out before use.

Location

When placing the toaster into service, pay attention to the following guidelines:

- Make sure power is off and the toaster is at room temperature.
 - Do NOT block or cover any openings on the unit.
 - Do NOT immerse cord or plug in water.
 - Keep cord away from heated surfaces.
 - Do NOT allow cord to hang over edge of table or counter.
1. Place the toaster in the required position.
 2. Attach the Feeder (Figure 1.)
 3. Plug the power cord into an appropriate power outlet. Refer to the specification plate for the proper voltage.

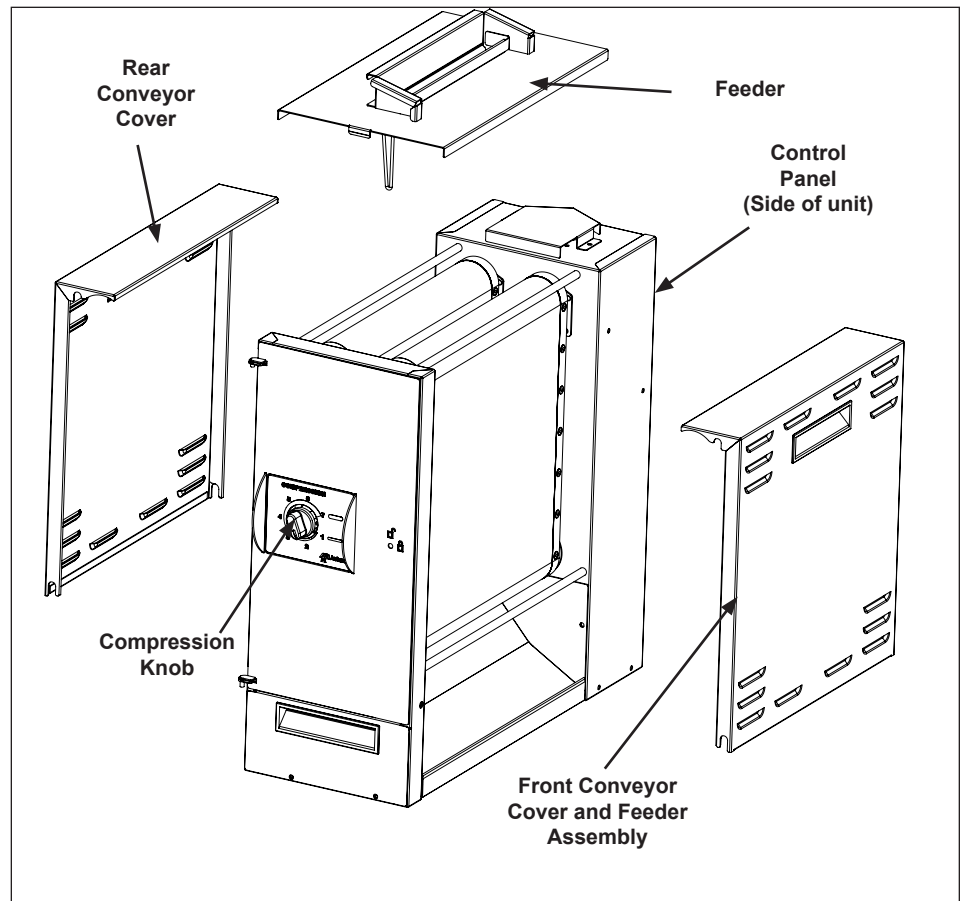


Figure 1. Components

Operating Instructions

The GST-1V toasts both sides of various bread products. Follow these steps to start the GST-1V:

1. Turn on the toaster and wait for warm-up to complete.
2. When the unit reaches operating temperature, the control panel displays **USE**.
3. Insert product into the Feeder. The toasted product drops out the bottom of the toaster.

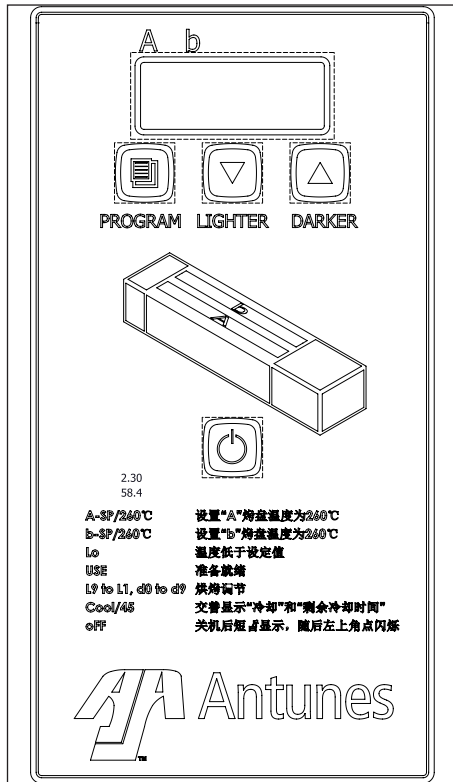


Figure 2. Control Panel and Display

Toasting Adjustments

There are variations in bread products Worldwide that are used on the Antunes GST toaster such as moisture content, bread formulations, age, tolerances etc. The GST was designed to compensate for bread product variations by allowing user to adjust the compression, light/dark (speed) & temperatures settings in order to achieve a Gold Standard toasted product.

1. **LIGHT DARK ADJUSTMENT:** Adjust the light dark setting with the ▲ or ▼ buttons. The default light/dark setting on the GST from the factory is 0 but can be adjusted from Lighter 0-9 to Darker 0-9 Light 9 is the lightest setting and dark 9 is the darkest. Each increase in "lighter" value will decrease the pass through time and each increase in "darker" value will increase the pass through time.
2. **TEMPERATURE ADJUSTMENT:** Adjust the set point temperature on the platens in the program menu. The default temperature settings on the GST are A Platen: 271°C (520°F) and B Platen: 271°C (520° F) . The temperatures can be increased or decreased.
3. **COMPRESSION ADJUSTMENT:** Adjust the compression knob on the left side of the unit as needed based on the thickness of the product you are toasting. It is recommended to first set the compression to the middle setting of 4. Test the setting by Toasting a few bread products in the unit. Decrease the compression number if the toast color is uneven or increase the number if the product appears over-compressed or smashed.
4. **PASS-THROUGH TIME ADJUSTMENT:** (see manager mode on pg7)

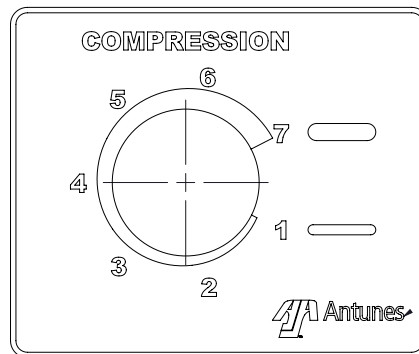


Figure 3. Compression Knob

User Mode allows an operator to view the toaster settings but does not permit any adjustments.

1. Press and hold the **PROGRAM** button for 5 seconds. After 5 seconds, the display will show the actual temperature of Platen A (front).
2. Press the **LIGHTER** button to toggle between the setpoint and actual temperature of Platen A (front).
3. Press the **PROGRAM** button to proceed to the Front Platen Heater menu. The display shows the actual temperature of Platen B (rear).
4. Press the **LIGHTER** button to toggle between the setpoint and actual temperature of Platen B (rear).
5. Press the **PROGRAM** button to proceed to the Motor Menu. The display shows the actual speed of the motor.
6. Press the **LIGHTER** button to toggle between the setpoint and actual speed of the Motor.

NOTICE: The unit will exit User Mode after 5 seconds of keypad inactivity.

Manager Mode

Manager Mode allows an operator to view and adjust the following settings:

- Platen A Temperature
- Platen B Temperature
- Motor Speed
- Temperature Units (Celsius or Fahrenheit)
- Current Selection: 208 or 240 volts

Manager Mode also allows an operator to view (but not adjust) the Ambient Temperature of the Control Compartment as well as the number of days of operation.

1. Turn the unit off.
2. Turn the power on while holding the **PROGRAM** button. Hold the button for 5 seconds until the display shows "EnA." Release the button.
3. To adjust the Platen A (front) Setpoint Temperature, press the **LIGHTER** or **DARKER** buttons to reach the desired temperature.

NOTICE: The recommended temperature setting for Platen A (front) is 271° C (520° F).

4. Press the **PROGRAM** button to proceed to the Platen B (rear) Setpoint Temperature.
5. To adjust the Platen B (rear) Setpoint Temperature, press the **LIGHTER** or **DARKER** buttons to reach the desired temperature.

NOTICE: The recommended temperature setting for the front Platen is 271° C (520° F).

6. Press the **PROGRAM** button to procedure to the Motor Speed Setpoint.

7. Adjust the Motor Speed Setpoint by pressing the **LIGHTER** or **DARKER** buttons to reach the desired speed.

NOTICE: The Motor Speed is adjustable from 20-100. The recommended setting is 66. Setting 66 = 13 second pass through. See table below for additional settings.

Motor value		Pass-through time
20n	=	60
40n	=	21
80n	=	12
100n	=	10

* Pass-through time is approximate (+/- 2 seconds) and will vary based on the product and compression settings used.

8. Press the **PROGRAM** button to proceed to the Temperature Units.
9. To change the Temperatures units from Fahrenheit or Celsius, press the **LIGHTER** or **DARKER** buttons.
10. Press the **PROGRAM** button to proceed to the Ambient Temperature of the Control Compartment.

NOTICE: No changes can be made to the Ambient Temperature of the Control Compartment. Temperatures under 150° F (66° C) are acceptable.

11. Press and hold the **PROGRAM** button to save any changes.

NOTICE: The unit exits Manager Mode after 30 seconds of keypad inactivity.

Safety Features

Hi-Limit Control

A Hi-Limit Control turns off electrical power to the heaters and control circuits if the unit overheats. To reset the control:

1. Allow 10 - 15 minutes for the unit to cool.
2. Locate the two Hi-Limit Controls on the rear of the unit. Remove the two black protective caps.
3. Press and release both buttons. Reinstall the protective caps.

NOTICE: If the Hi-Limit Controls require continuous resetting, contact your Authorized Service Agency.

Purging Product from Toaster

If product gets stuck in the toaster, press and hold both the **UP** and **DOWN** arrow buttons to increase the belt speed until the product is purged from the toaster.

Daily Cleaning

Clean the Toaster and Belt Wraps

1. Turn the toaster's power switch to the off position and it will enter a cool-down mode. The conveyors will continue to rotate during cool-down mode for ease of cleaning and the unit will automatically shut down after 45 minutes
2. Using heat resistance gloves, remove the feeder and front and rear conveyor covers.

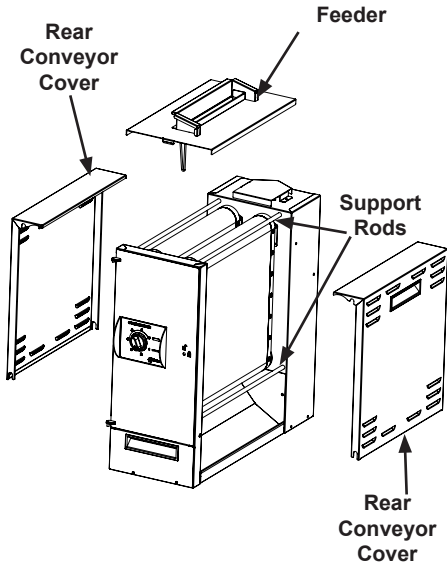


Figure 4. Removing Components

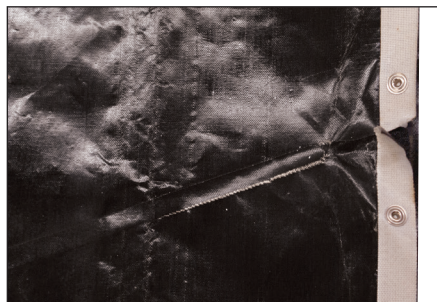
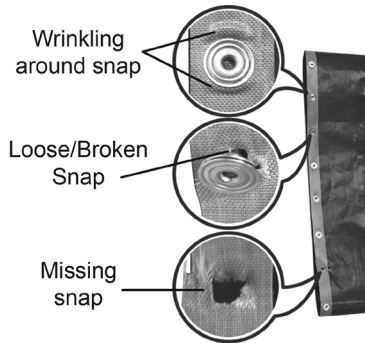
NOTICE: With proper maintenance Belt Wraps can last six months or longer depending upon product and usage.

3. Carefully inspect the front conveyor belt for tears or damaged snaps. (See example images for of damaged belts). Replace any damaged Belt Wraps as needed.
4. If the front belt is in good condition, spray a clean, damp towel with an approved degreaser. Wipe the front belt clean. Rinse the front belt with a separate clean, damp towel sprayed with an approved sanitizer solution. Allow to air dry.

If the belts are torn and folded, replace the belts.



If the belts are missing snaps and are damaged, replace the belts.



NOTICE: The belt rollers will continue turning while in cool-down mode. This allows you to clean the entire belt. Only clean the belt where it is in front of the Backing Plate to avoid causing damage to the belt. Repeat this step several times if there is heavy carbon buildup on the conveyor belt.

5. Carefully inspect the rear conveyor belt for tears or damaged snaps. (See example images of damaged belts). Replace any damaged Belt Wrap as needed.
6. If the rear belt is in good condition, spray a clean, damp sanitized towel with Sink Detergent solution. Wipe the rear belt clean. Rinse the rear belt with a separate clean, damp sanitized towel. Allow to air dry.

NOTICE: The belt rollers will continue turning while in cool-down mode. This allows you to the entire belt.

NOTICE: Only clean the belt where it is in front of the Backing Plate to avoid causing damage to the belt.

7. Wash, rinse, and sanitize the feeder and conveyor covers in a 3 compartment sink. Allow to air dry.
8. Reinstall the clean front and rear conveyor covers.
9. Clean the outside surfaces of the toaster with clean, damp sanitized towel sprayed with an approved stainless steel cleaner. Rinse with a clean, damp sanitized towel and allow to air dry.

Quarterly Cleaning

Remove Belt Wraps and Clean Rollers

1. Turn the toaster's power switch to the off position. The toaster enters a cool-down mode and will automatically shut down when complete.
2. Unplug the power cord once the cool-down period is complete.

NOTICE: Wait for the cool-down period to complete before unplugging the power cord.

3. Remove the feeder using heat-resistant gloves.
4. Remove the front and rear conveyor covers by lifting up and away from the unit. Set the compression knob to 7.

NOTICE: Reposition the toaster as needed to perform these steps.

5. Unlock the lock on the left side panel with a flathead screwdriver and open the panel. Set the compression knob to 7.
6. Push down on the front and rear belt rollers and move them away from the center of the toaster. Use both hands. This removes tension and locks the rollers in place.
7. Lift the upper conveyor lock. Then rotate down so it rests on the camshaft of the rear belt roller.
8. Pull down the lower conveyor lock. This provides access to the front and rear belt rollers and belts.
9. Carefully remove both of the belts from the toaster.
10. Wipe all four rollers and backing plates with a clean, damp sanitized towel. Make sure to remove all debris from the rollers and the backing plates so they are as clean as possible; use an approved degreaser if required.
11. Use a dry cloth towel or nylon-bristled brush to remove all debris from both side compartments, inside of the toaster, and underneath the rollers.

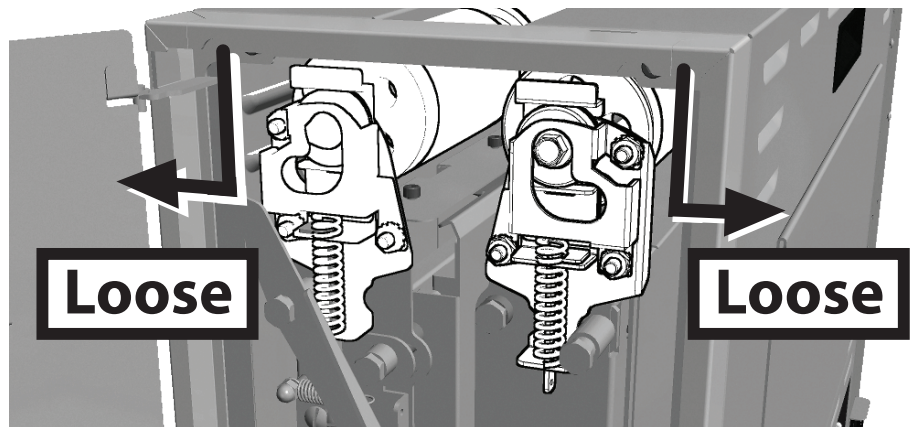


Figure 5. Conveyor Rollers

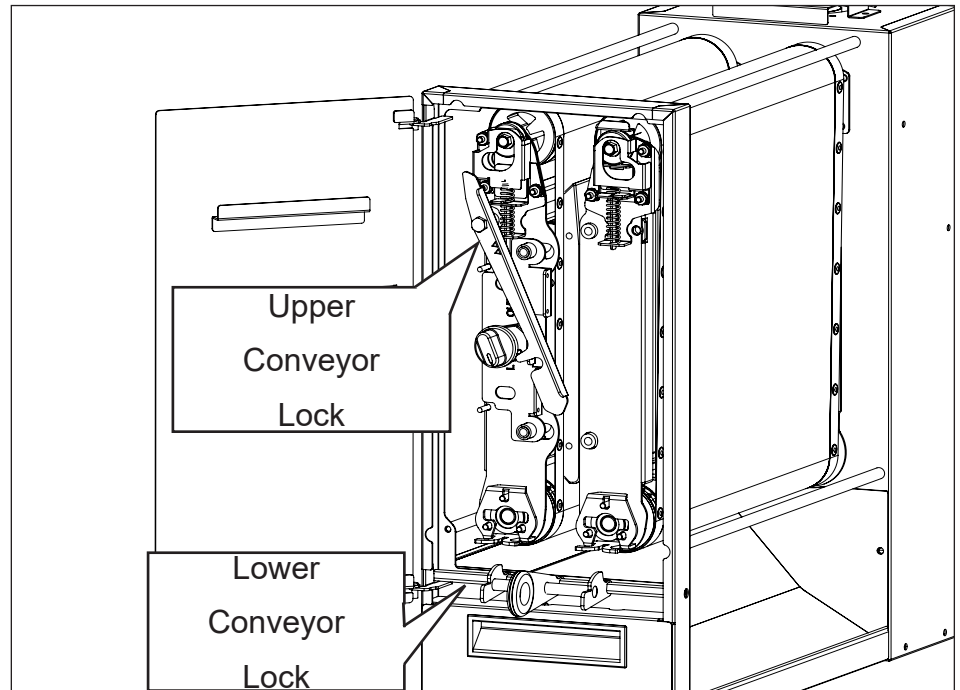


Figure 6. Conveyor Locks

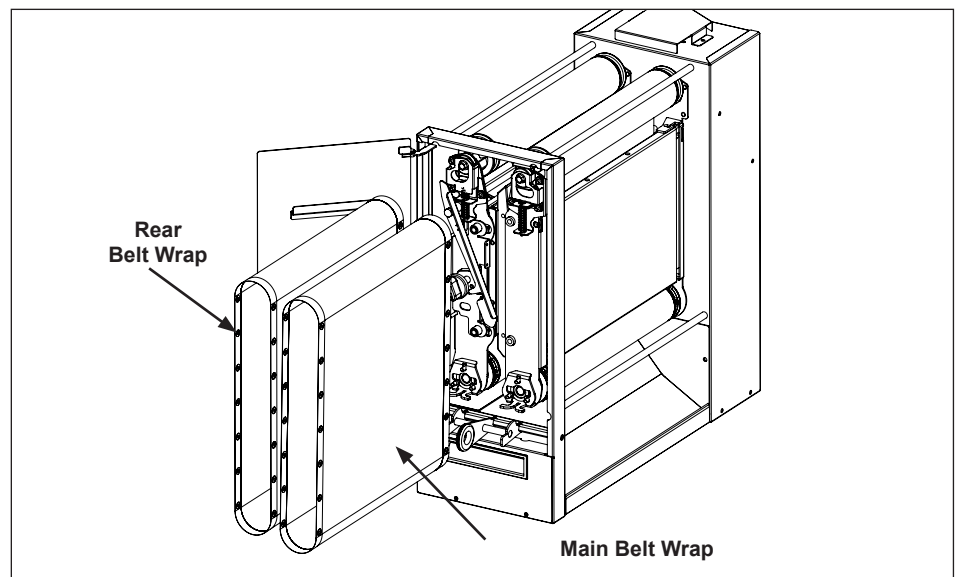


Figure 7. Belt Wraps

Install Belt Wraps

1. If you are installing the existing belt wraps, inspect the belts. Replace belt wraps if worn or damaged. If the belt wraps are in good condition put them back on the toaster.
2. For new or existing belts, wipe both sides of the belts with a clean, damp sanitized towel. Allow to air dry.
3. Slide the belts gently over the appropriate top and bottom roller. Make sure the belt lines up properly on the rollers. The snaps on the belts should face the inside of the roller.
4. Lift up the front and rear belt roller. Use both hands. This will add tension and lock them in place.
5. Lift the lower conveyor lock to lock the rollers into place.

NOTICE: Lift up on the camshaft of the rear conveyor roller while lifting the conveyor lock.

6. Lift the upper conveyor lock and lock in place on the conveyor assembly. Set the compression knob to 4.
7. Close the side panel and lock the lock using a flathead screwdriver on the side panel.
8. Re-install the front and rear conveyor covers so they lock into place.
9. Re-install the feeder onto the top of the unit.
10. Plug in the power cord and turn the unit on.

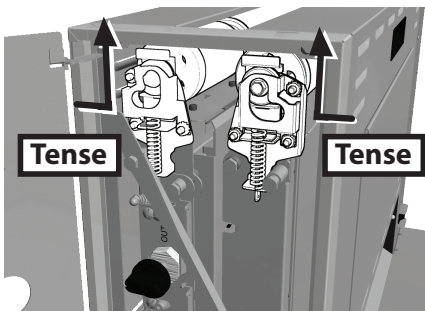


Figure 8. Conveyor Rollers Tense

Annual Cleaning

Clean Cooling Fans and Electrical Housings

1. Turn the toaster's power switch to the off position. The toaster enters a cool-down mode and will automatically shut down when complete. Unplug the power cord.
2. Remove the feeder and set aside.
3. Remove the top two screws from the control housing cover and slowly lower the cover.
4. Remove any debris or dust from the cooling fan with a small brush. Wipe away any debris with a clean, dry towel. Inspect the electrical compartment for crumbs and debris. Clean out all crumbs and debris using a clean, dry towel or nylon bristled brush. Be careful not to disrupt any of the electrical wiring.
5. Slowly close the control housing cover. Reconnect with the screws.
6. Remove the screws from the bottom plate on the rear of the unit and slowly lower the cover.
7. Remove any debris or dust from the cooling fan with a small brush. Wipe away any debris with a clean, dry towel. Inspect the electrical compartment for crumbs and debris. Clean out the crumbs and debris using a clean, dry towel or nylon bristled brush. Be careful not to disrupt any of the electrical wiring.
8. Close the bottom plate and re-install the screws.
9. Reattach the feeder. Plug in the power cord, turn the power on, and test the unit before returning it to service.

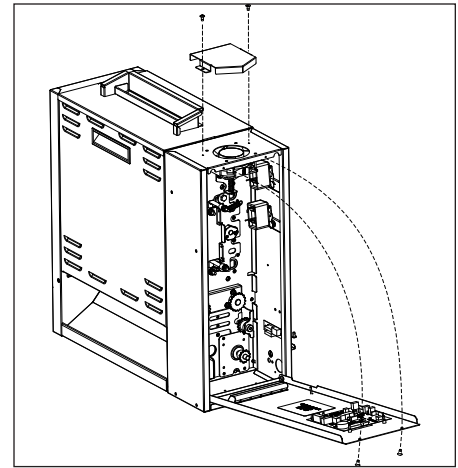


Figure 9. Accessing Top Cooling Fan

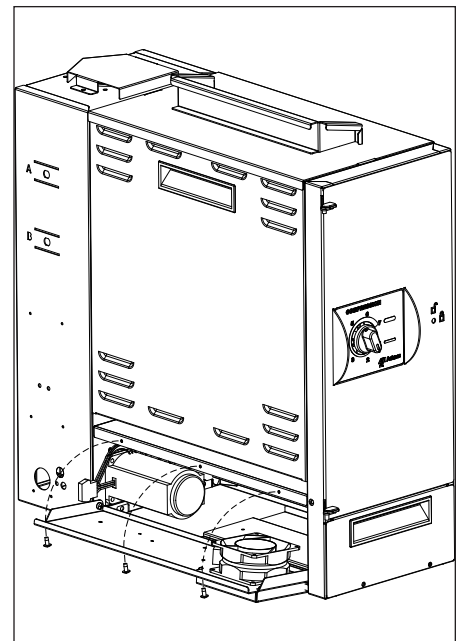


Figure 10. Accessing Rear Cooling Fan

Troubleshooting

Problem	Possible Cause	Corrective Action
Control Display flashes Err 15 continuously. Product not toasting properly.	The A Platen temperature has not reached the setpoint temperature within 20 minutes.	Allow the unit to warm up for 30 minutes and then recheck. If the Control Display still flashes Err 15 , contact your maintenance person or Authorized Service Agency for service.
	Failed A Platen Thermocouple. Failed Control Board	Contact your maintenance person or Authorized Service Agency for service.
Control Display flashes Err14 continuously. Product not toasting properly.	The B Platen temperature has not reached the setpoint temperature within 20 minutes.	Allow the unit to warm up for 30 minutes and then recheck. If the Control Display still reads Err 14 , contact your maintenance person or Authorized Service Agency for service.
	Failed Rear Platen Thermocouple. Failed Control Board.	Contact your maintenance person or Authorized Service Agency for service.
Control Display flashes Err 9 continuously.	Control Compartment ambient temperature is above 150° F (66° C)	Verify side vents on toaster are unblocked and not near other heating appliances. If problem persists, contact your maintenance person or Authorized Service Agency for service.
	Failed Cooling Fan. Failed Control Board	
Control Display Flashes Err 19 continuously. Product Burns.	Failed A Platen Solid State Relay.	Contact your maintenance person or Authorized Service Agency for service.
	Failed Control Board. Failed A Platen Thermocouple.	
Control Display flashes Err 18 continuously. Product Burns.	Failed B Platen Solid State Relay.	Contact your maintenance person or Authorized Service Agency for service.
	Failed Control Board. Failed B Platen Thermocouple.	
Control Display flashes Err 13 continuously. Product not toasting properly.	Loose A Platen Thermocouple connection on Control Board or the Front Platen Thermocouple is open.	Re-secure the A Platen Thermocouple to the Control Board. If the Control Display still reads Er 13 , check the front Thermocouple for continuity. Contact your maintenance person or Authorized Service Agency for service.
	Failed Control Board.	
Control Display flashes Err 11 continuously. Product not toasting properly.	Loose B Platen Thermocouple connection on Control Board or the Rear Platen thermocouple is open.	Re-secure the B Platen Thermocouple connection to the Control Board. If the Control Display still reads Er 11 , check the Rear Thermocouple for continuity. Contact your maintenance person or Authorized Service Agency for service.
	Failed Control Board.	
Control Display flashes Err 12 continuously. Product not toasting properly.	Shorted A Platen Thermocouple to ground.	Disconnect and re-secure the A Platen Thermocouple connection to the Control Board. If the Control Display still reads Er 12 , check the Rear Thermocouple for continuity. Contact your maintenance person or Authorized Service Agency for service.
	Failed Control Board	
Control Display Flashes Err 10 continuously. Product not toasting.	Shorted B Platen Thermocouple to ground.	Re-secure the B Platen Thermocouple connection to the Control Board. If the Control Display still reads Er 10 , check the Rear Thermocouple for continuity. Contact your maintenance person or Authorized Service Agency for service.
	Failed Control Board.	

Troubleshooting Continued

Problem	Possible Cause	Corrective Action
Control Display flashes Err 20.	Mechanical bind in one or both conveyors.	Enter "user mode" to check the motor speed. Check both conveyors for mechanical binds. Test the motor. Replace necessary parts. Contact your maintenance person or Authorized Service Agency for service.
	Worn or damaged Ball Bearings.	
	Drive chain or sprockets damaged.	
	Failed Motor.	
	Failed Control Board.	
Control Display flashes Err 8	Motor is running when it shouldn't be.	Contact your maintenance person or Authorized Service Agency for service.
Crowns and/or Heels must be forced into the toaster. Product sticking and burning.	PTFE Belts not cleaned properly.	Clean PTFE Belts as described in the Maintenance section of this manual.
	PTFE Belts are dirty, worn, or damaged (replace every 3 months).	Clean or replace Silicone Belts as described in the Maintenance section of this manual.
Product not toasting adequately or too light/dark.	One of the Conveyor top shafts is stuck in the lower lock position.	Inspect positions of the shafts as described in the Maintenance section of this manual.
	Either both Upper/Lower Conveyor locks are not properly locked in place. To adjust compression, light/dark setting, and/or temperature, see page 7.	Inspect the proper position of the locks as described in the Maintenance section of this manual.
Compression side door will not close.	Either both Upper/Lower Conveyor Locks are not properly locked in place.	Inspect the proper position of the locks as described in the Maintenance section of this manual.
	The lock on the Compression Side Door is in the locked position when trying to close the door.	Turn the lock to the unlocked position before closing the door.
Fan is making an unusual sound.	Failed Cooling Fan.	Verify vents on toaster are unblocked and not near other heating appliances. Clean fans as described in the Maintenance section of this manual. If problem persists, contact your maintenance person or Authorized Service Agency for service.
	Cooling Fan is dirty and needs to be cleaned.	
Control Display flashes Err 17 continuously. Product is not toasting properly.	A platen Hi-Limit Control is tripped.	Allow the unit to cool and reset the A platen Hi-Limit Control. If it trips again, contact your maintenance person or Authorized Service Agency for service.
Control Display flashes Err 16 continuously. Product is not toasting properly.	B Platen Hi-Limit Control is tripped.	Allow the unit to cool and reset the B platen Hi-Limit Control. If it trips again, contact your maintenance person or Authorized Service Agency for service.

Troubleshooting Continued

Problem	Possible Cause	Corrective Action
Control Display is blank.	Power Cord is not plugged in.	Plug the Power Cord into the appropriate outlet. Turn the toaster on. If the Control Display is still blank, contact your maintenance person or Authorized Service Agency for service.
	Circuit Breakers turned off or tripped. Damaged electrical outlet, plug, or Power Cord. Power Switch damaged.	Reset Circuit Breakers. If they trip again, check the Power Cord, Plug, and outlet for damage. Contact your maintenance person, Authorized Service Agency, and Electrician for service.
	Faulty Transformer.	Replace Transformer.
Conveyors not turning.	Motor Drive Chain is detached from sprockets.	Reinstall the Drive Chain.
	Drive Chain needs lubrication.	Lubricate Drive Chain with Lubit-8 (P/N 2140152).
	Failed Drive Motor.	Contact your maintenance person or Authorized Service Agency for service.
Control Display flashes Err 1, 2, 3, 5, 6, 7 , or any number above Err 20 .	Internal Control Board fault.	The Control Board needs to be replaced. Contact your maintenance person or Authorized Service Agency for service.

Replacement Parts

Parts List

(See Exploded Views for more information)

NOTICE
Use only genuine Antunes replacement parts in this unit. Use of parts other than those supplied by the manufacturer will void the warranty.

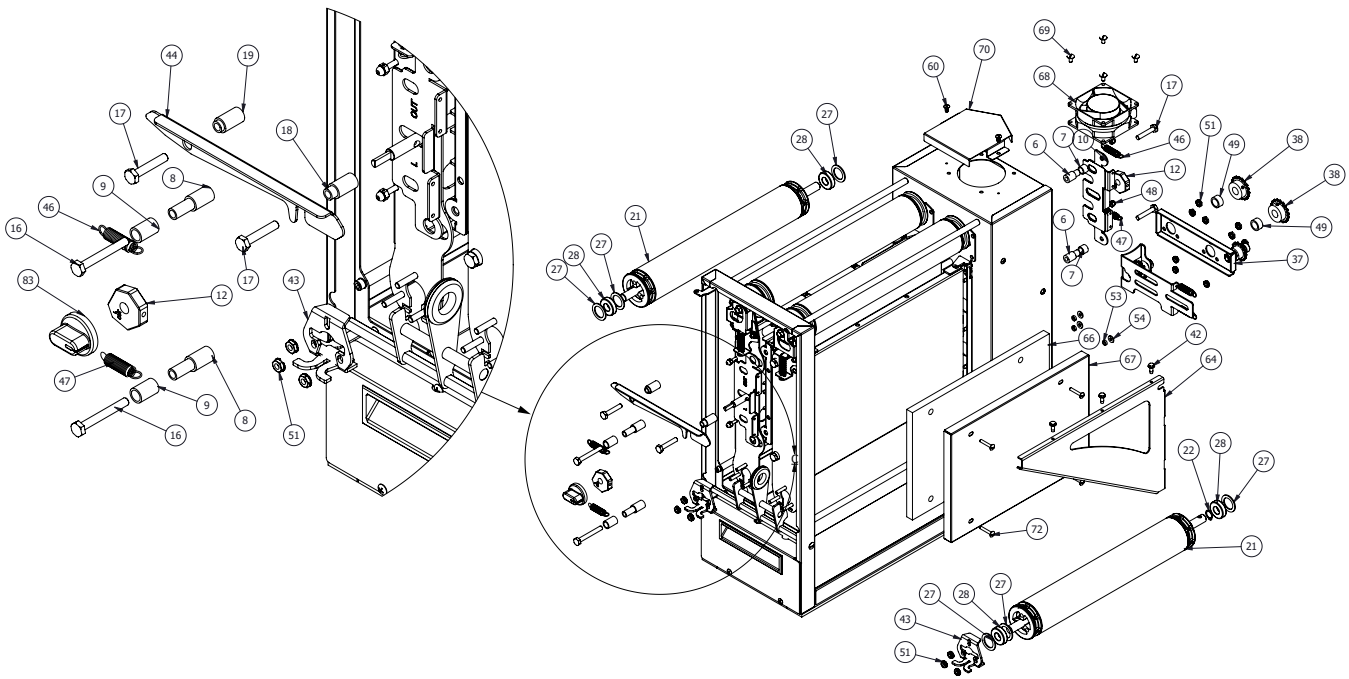
Item No.	Part #	Description	Qty.
1	0014006	Housing Assembly	1
2	0014007	Electrical Panel Assembly	1
3a	0014008	Adj. Platen Assembly (Mfg. No. 9211000 Only)	1
3b	0014019	Adj. Platen Assembly (Mfg. No. 9211001 Only)	1
4	0024096	Weldment, Adj. Platen Frame	1
5	0024094	Weldment, Fixed Platen Frame	1
6	2120260	Spacer, Adjustable Frame RH	2
7	2120224	Sleeve Bearing, .50" OD X .375" LG	2
8	2120213	Spacer, Frame & Platen, LH	4
9	2120223	Sleeve Bearing, .50" OD X .75" LG	2
10	0014011	Cam Bracket & Thrust Strip Assembly, RH	1
11	0012814	Cam Bracket & Thrust Strip Assembly, LH	1
12a	7000952	Cam (Mfg. No. 9211000 Only)	2
12b	2150362	Cam (Mfg. No. 9211001 Only)	2
13	2150475	Cam Shaft	1
14a	0100298	Platen, Main 230V, 1900W (Mfg. No. 9211000 Only)	1
14b	0100290	Platen, Main 208V, 1900W (Mfg. No. 9211001 Only)	1
15	2120288	Spacer, Platen RH	2
16	3250194	Screw, Hex Head #1/4-20 X 2.00", S.S.	6
17	325P193*	Screw, Hex Head #1/4-20 X 1.375" Screw	4
18	2120216	Spacer Locking 1.062 LG	1
19	2120217	Spacer Locking .937 LG	1
20	0024080	Weldment, Idler Roller Top	2
21	0024082	Weldment, Drive Roller Bottom	2
22	3000123	Ring, Retaining, External	4
23	0506293	Plate, Tensioner - End Housing, Rear	1
24	0506294	Plate, Tensioner - End Housing, Front	1
25	2100334	Thrust Strip, Teflon, 2.140 X 1	4
26	0022283	Weldment, Bearing Bracket & Spring Guide - LH	2

Item No.	Part #	Description	Qty.
27	0504320	Spacer .781 X 1.125 X 0.06"	10
28	2150285	Bearing, Single Groove S.S.	8
29	0508247	Bracket, Tensioner - End Housing, Rear	1
30	0506292	Bracket, Tensioner - End Housing, Front	1
31	0022284	Weldment, Bearing Bracket & Spring Guide - RH	2
32	325P176*	Screw, Flange Hex Head Cap	2
33	0506144	Plate, Tensioner Rh	2
34	0508248	Bracket, Tensioner	1
35	0506163	Bracket, Tensioner	1
36	0012603	Sprocket/Tensioner Bracket Assembly	1
37	0014014	Sprocket/Retainer Assembly	1
38	2150185	Sprocket, 25B18 1/2" Bore	2
39	3100187	Screw, Set #10-32 X 3/8 Hex Socket-Cone Point	2
40	7001604	Chain, Drive	1
41	0013183	Motor/Sprocket Assembly	1
42	3100214	Screw, Hex #10-32 X 1/2"	16
43	0506167	Bracket, Bearing	2
44	0509018	Bracket, Housing Locking	1
45	0600158	Spring, Roller Tension	4
46	0600143	Spring, Compression	2
47	0600159	Spring, Cam Adj.	2
48	3080340	Nut, Hex Acorn Lock #8-32	4
49	2120221	Shaft Spacer	2
50	325P109*	Screw, Hex cap 1/4-20 X 1/2"	5
51	310P146*	Nut, Hex "KEPS" #10-32	26
52	308P143*	Nut, Hex "KEPS" #8-32	5
53	0506278	Spacer, .312 X .187 X .105	3
54	3080142	Washer, Flat #8	3
55	0509015	Conveyor Cover	2
56	0024108	Cover Weldment	1
57a	0024105	Feeder Weldment (Mfg. No. 9211000 Only)	1
57b	0024237	Feeder Weldment (Mfg. No. 9211001 Only)	1
58	0014012	End Cover Assembly	1
59	7001142	Relay S.S Dual Pole	1
60	308P157*	Screw, tap 8-32 X 3/8" LG	9
61	0014010	Control, Cover Assembly	1
62	0024231	Weldment, Thermocouple Tube	1
63	040P147*	Bushing, Shorty 7/8	1
64	0508992	Support Bracket, RH	1
65	0508998	Support Bracket, LH	1
66	0400528	Insulation, Main Platen	1
67	0508999	Insulation Plate	1
68	7001440	Fan Replacement Kit	1

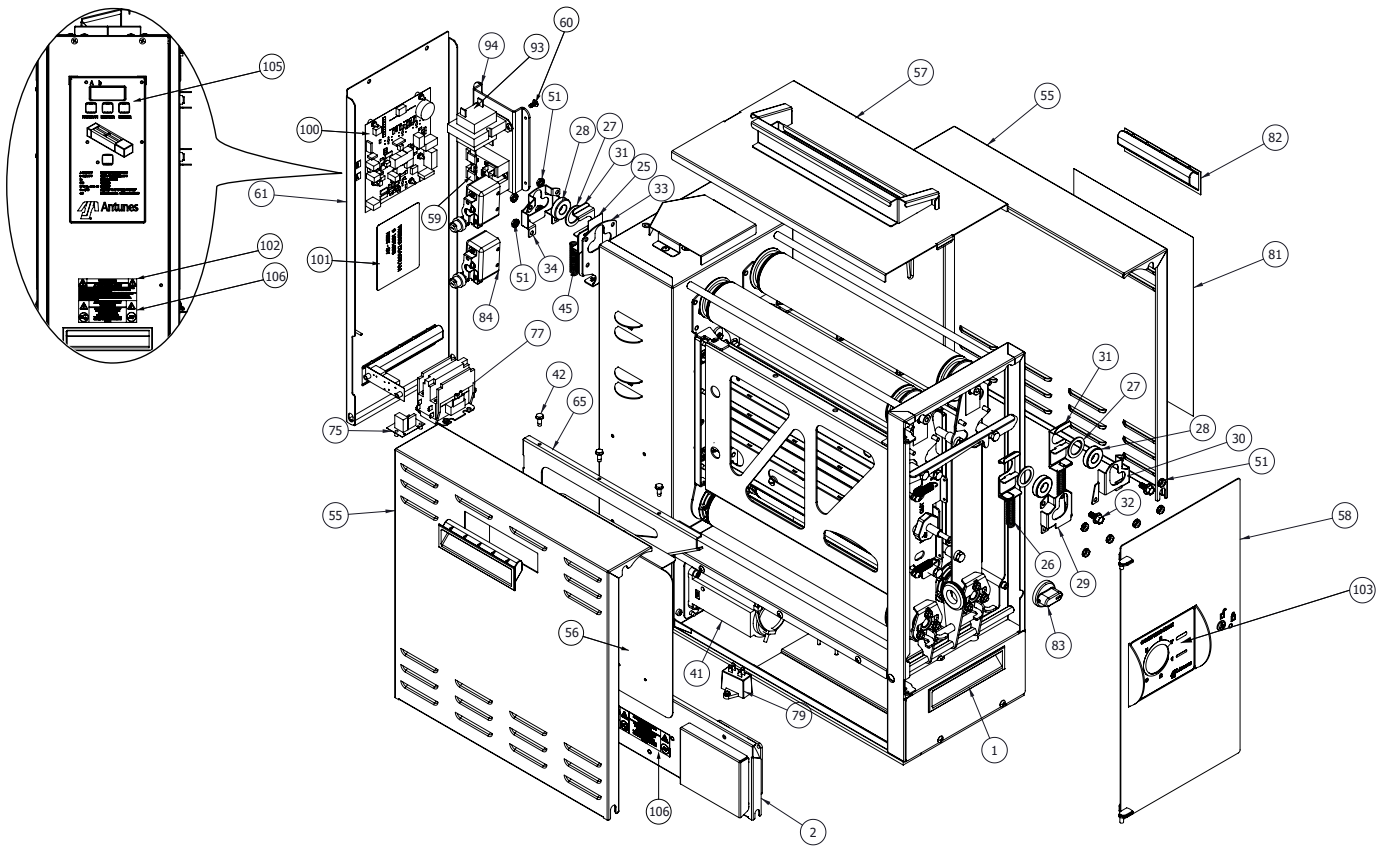
Item No.	Part #	Description	Qty.
69	310P109*	Screw, Mach #10-32 X 3/8	4
70	0507246	Cover, Duct Fan	1
71	0600157	Spring, Chain Tension	2
72	308P164*	Screw, Mach, #8-32 X 1	4
73	308P203*	Screw, 8-32 X 3/8 with Int. Tooth Washer	1
74	2110197	Clip, Steel Cable	1
75	4070198	Snubber Board	1
76	21000-0043	Spacer, 3/8 CBS Thread Female	2
77	7001017	Contactora, 2 Pole Normally Open	1
78	3060130	Nut, Hex "KEPS" #06-32 Steel; Zinc Plated	3
79	4010221	Cap-Mp, Motor Run	1
80	TER62-0006	Term-Receipt 3/16" Faston .135" Max	1
81	1001452	Label - PVC Removal	1
82	2100212	Handle, Pocket Pull, Snap-In	2
83	7001324	Knob, 1/4 Shaft	1
84	7001144	Thermostat, Hi-Limit 700F	2
85	4051045	Thermocouple Type "K" (Open End)	2
86	4060374	Grounding Lug	1
87	308P124*	Screw, Mach #8-32 X 1/2, 1-WAYHD	1
88	406P107*	Cable Tie, 1/8"W X 5"	15
89	4060442	Hellerman Tyton Plastic Cable Tie	1
90	7001528	Varistor Board Kit	1
91	304P105*	Nut, Hex 'KEPS' #4-40 Zinc	2
92	2110199	Kwik-Klip, Type "C"	3
93	4010187	Transformer	1
94	0507247	Heat Sink	1
95	7001907	Main Belt (Single Pack)	2
96	0700940	Wire Set (Club Voltage)	1
97	0700941	Wire Set (Control Board)	1
98	0700942	Wire Set (Fan XFME)	1
99	0700943	Wire Set (SSR HI Volt)	1
100	4070230	Control Board	1
101	1001598	Wiring Diagram	1
102	1000900	Label, Service Warning	
103	1002762	Label, Compression	1
104a	1031482	Spec Label (Mfg. No. 9211000 Only)	1
104b	1031483	Spec Label (Mfg. No. 9211001 Only)	1
105	1002761	Label, Control	1
106	1001213	Label, Electrical Shock Hazard	1
107	0700588	Power Cord HRN/IEC309	1
* Available in packages of ten (10)			

Replacement Parts

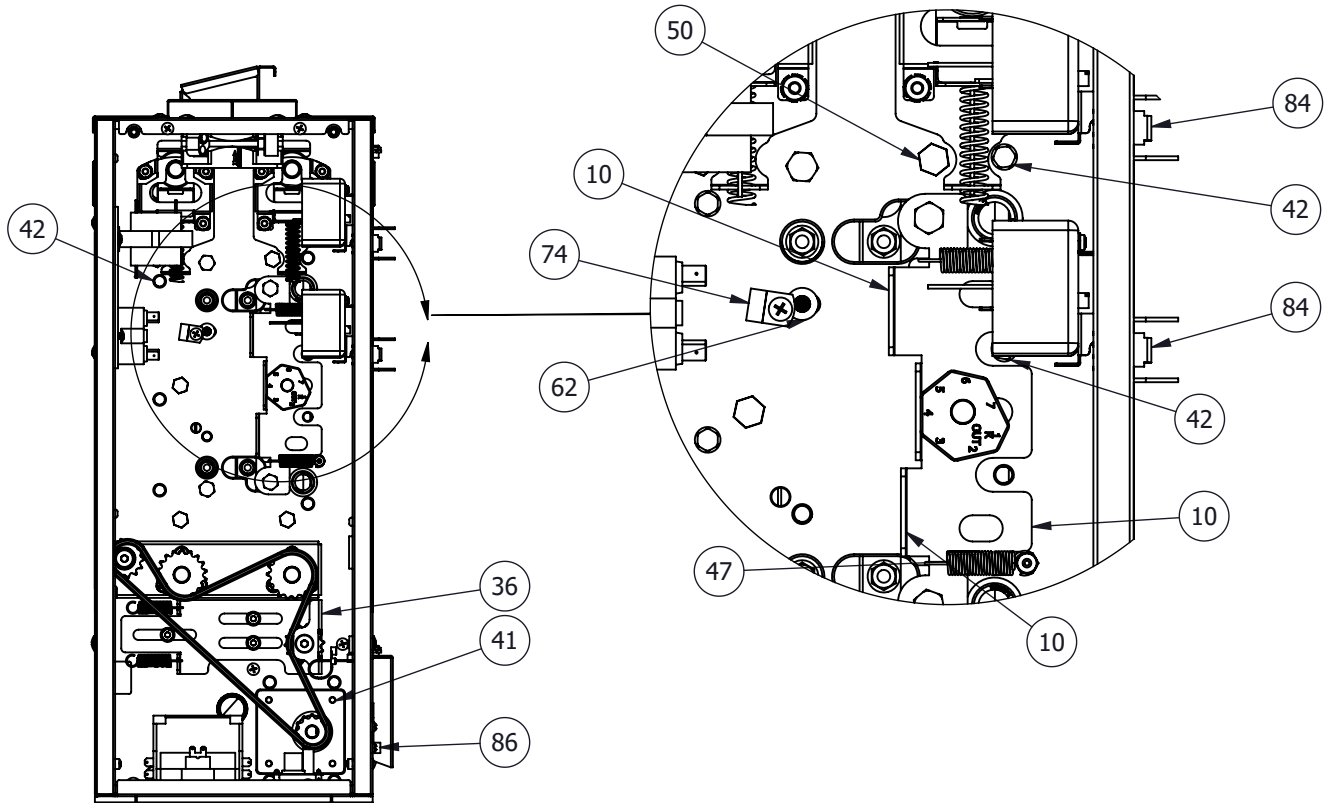
Exploded View 1



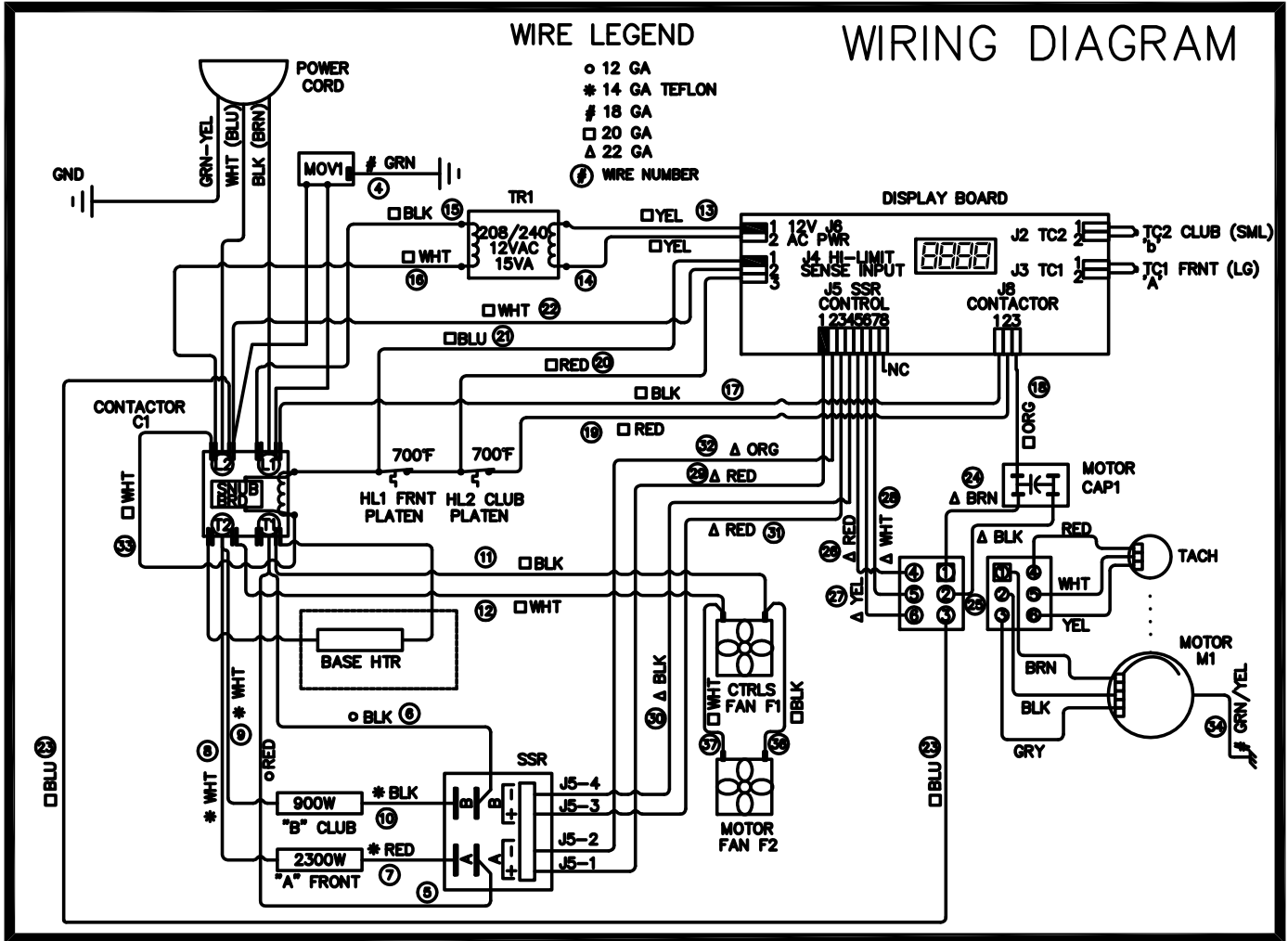
Exploded View 2



Exploded View 3



Wiring Diagram



Limited Warranty

Equipment manufactured by Antunes has been constructed of the finest materials available and manufactured to high quality standards. These units are warranted to be free from electrical and mechanical defects for a period of one (1) year from date of purchase under normal use and service, and when installed in accordance with manufacturer's recommendations. To insure continued operation of the units, follow the maintenance procedures outlined in the Owner's Manual. During the first 12 months, electromechanical parts, non-overtime labor, and travel expenses up to 2 hours (100 miles/160 km), round trip from the nearest Authorized Service Center are covered.

1. This warranty does not cover cost of installation, defects caused by improper storage or handling prior to placing of the Equipment. This warranty does not cover overtime charges or work done by unauthorized service agencies or personnel. This warranty does not cover normal maintenance, calibration, or regular adjustments as specified in operating and maintenance instructions of this manual, and/or labor involved in moving adjacent objects to gain access to the equipment. This warranty does not cover consumable/wear items. This warranty does not cover damage to the Load Cell or Load Cell Assembly due to abuse, misuse, dropping of unit/shock loads or exceeding maximum weight capacity (4 lbs). This warranty does not cover water contamination problems such as foreign material in water lines or inside solenoid valves. It does not cover water pressure problems or failures resulting from improper/incorrect voltage supply. This warranty does not cover Travel Time & Mileage in excess of 2 hours (100 miles/160 km) round trip from the nearest authorized service agency.
2. Antunes reserves the right to make changes in design or add any improvements on any product. The right is always reserved to modify equipment because of factors beyond our control and government regulations. Changes to update equipment do not constitute a warranty charge.
3. If shipment is damaged in transit, the purchaser should make a claim directly upon the carrier. Careful inspection should be made of the shipment as soon as it arrives and visible damage should be noted upon the carrier's receipt. Damage should be reported to the carrier. This damage is not covered under this warranty.
4. Warranty charges do not include freight or foreign, excise, municipal or other sales or use taxes. All such freight and taxes are the responsibility of the purchaser.
5. This warranty is exclusive and is in lieu of all other warranties, expressed or implied, including any implied warranty or merchantability or fitness for a particular purpose, each of which is hereby expressly disclaimed. The remedies described above are exclusive and in no event shall Antunes be liable for special consequential or incidental damages for the breach or delay in performance of this warranty.

The warranty does not extend to:

- Damages caused in shipment or damage as result of improper use.
- Installation of electrical service.
- Installation, calibration, or adjustment.
- Normal maintenance outlined in this manual.
- Malfunction resulting from improper service or maintenance.
- Damage caused by improper installation, abuse, or careless handling.
- Damage from moisture getting into electrical components.
- Damage from tampering with, removal of, or changing any preset control or safety device.
- Damage caused by parts or components not provided by Antunes



Corporate Headquarters

Carol Stream, Illinois

Phone: +1 (630) 784-1000

Toll Free: +1 (800) 253-2991

Fax: +1 (630) 784-1650

China Facility

Suzhou, China

Phone: +86-512-6841-3637

Fax: +86-512-6841-3907